



• SMART AIR CONDITIONING CONTROLLER •



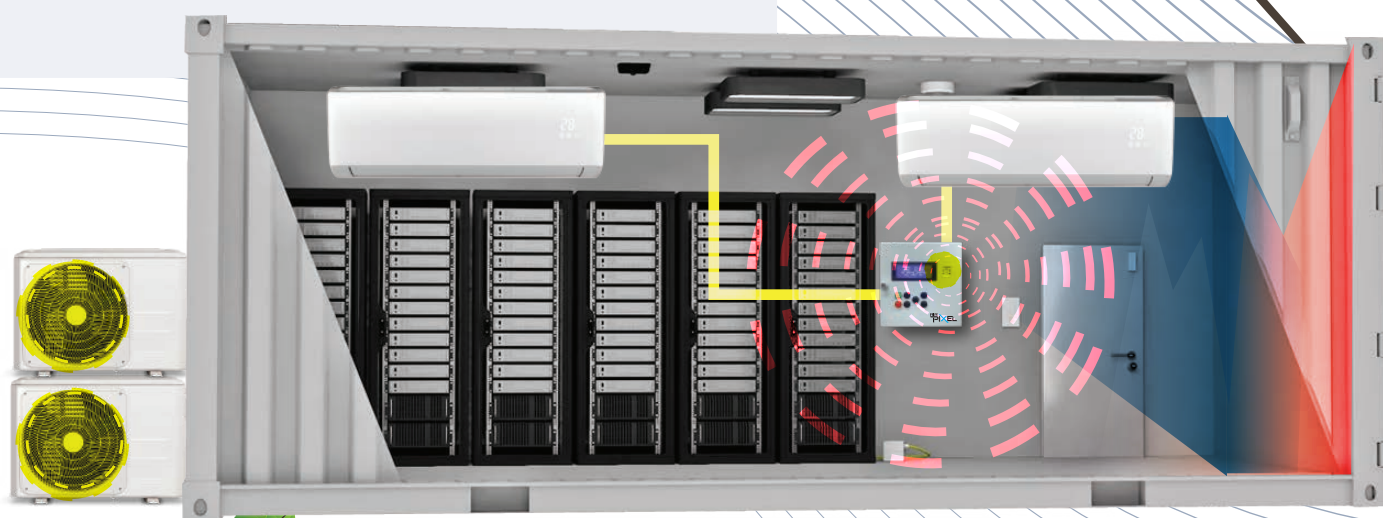
INDUSTRIAL - COMMERCIAL - RESIDENTIAL



FEATURES

Temperatures Boundary Setting

The air conditioner will operate under a temperature boundary which is can be set using setpoint/setback temperature parameters and the temperature is based on actual room temperature.



Cooling Load Sharing

AirPixel is capable to operate in groups. Load sharing can be done for up to 20 unit air conditioner at one time.

Hardware and Communication Failure System Detection

AirPiXel is capable to identify and display an alarm if

In certain condition, AirPiXel will instruct air conditioner to running full speed if actual room temperature continues increase toward high temperature set point.

Alarm Display	Description
IDU AC Fail	Indoor unit Blower is not operate
ODU AC Fail	Compressor faulty/ low and high refrigerant pressure
High Temperature	Actual room temperature is over high temperature setting
COMM Fail	AC main card unsuccessfully communicate with AC card



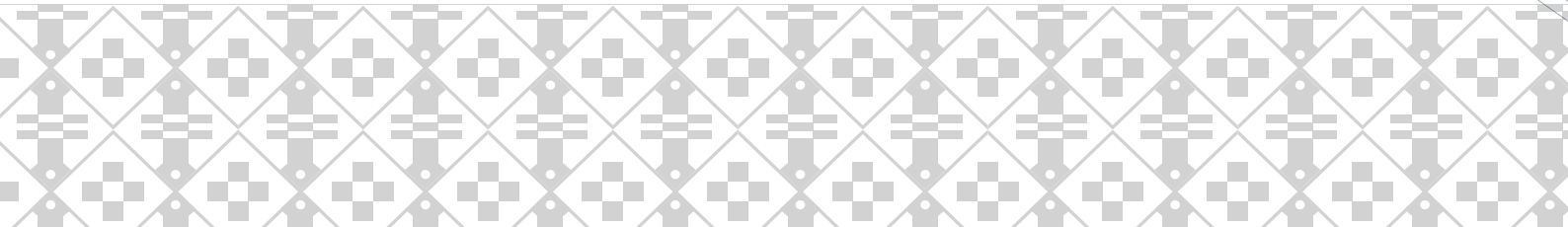
LCD Display

All the parameters and setting will be display via LCD screen such as room temperature, humidity temperature, alarms, setting temperature and others. The LCD display is placed at AC Main Card.



INSTALLATION

- AirPiXel installation is retrofitted to an existing air conditioner of various sizes/types.
- AirPiXel consists of AC Main Card and AC Card. AC main card is placed at the desired area to capture actual room temperature and AC Card is placed close to the existing air conditioner.
- AirPiXel can be fit on single/ three phase wiring air conditioner.





MECHANICAL

Main Card (L x H x D)	110mm x 190mm x 180 mm
AC Card (L x H x D)	50mm x 115mm x 130mm
IP Rating	IP20

INSTRUMENTATION

Temperature	Able to Measure of Room Temperature
Humidity	Able to Measure of Relative Humidity, RH
Energy	Total & per Phase, Voltage, Ampere, Power Factor, Frequency Hz

ELECTRICAL

Operating Phase	Single Phase / Three Phase
Controlling of Cooling Load Condition	Individual / Group
Input Frequency	50 Hz
Input Voltage	200 Volt – 240 Volt

MEASUREMENT & ENVIROMENT

Target Temperatures Range	Set Point / Set Back
Temperature Setpoint Range	16°C - 30°C
Working Humidity (RH)	10% – 120%
Operating Temperature	(-20°C) – 60°C
Storage Temperature	10°C – 64°C

CONTROL & CAPABILITY

System Interface	Touch Screen Display
Concept of Planning	Retrofit Installations
Selection Mode	Auto / Manual Bypass Capability
Communication	RF & Ethernet Remote Monitoring System



INDUSTRIAL - COMMERCIAL - RESIDENTIAL

Copyright © 2020 AirPixel. All rights reserved
TECHNOLOGY MADE IN MALAYSIA
www.taiace.com